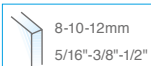
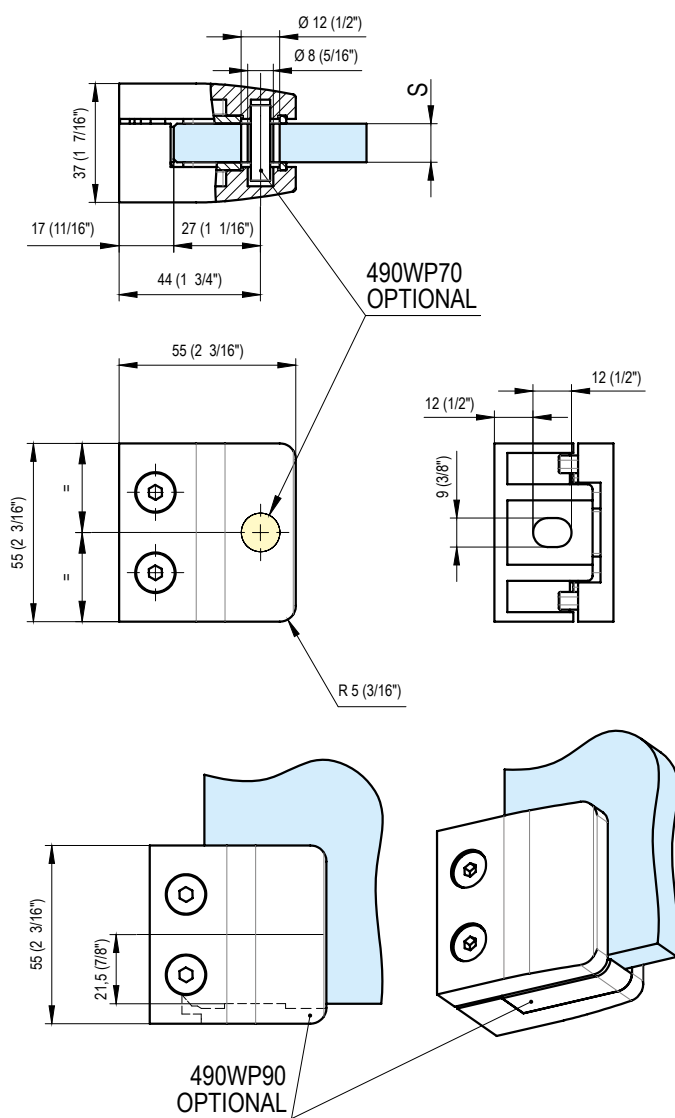
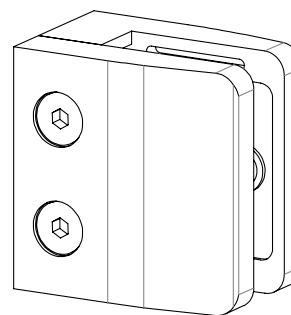


490W10

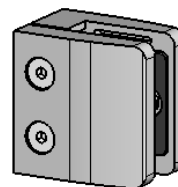


- Morsetto quadro 55x55. In acciaio inox Aisi 316
- Abrazadera cuadrada 55x55. En acero Aisi 316.
- Squared clamp 55x55. In stainless steel Aisi 316.
- Rechteckiger Glasklemhalter 55x55. Edelstahl Aisi 316.
- Pince carrée 55x55 en inox Aisi 316.



Compreso / Included

Corpo morsetto / Clamp Body



490W10



Da ordinare in base allo spessore del vetro
To be purchased according to the glass thickness

Guarnizioni / Gaskets

S= 8 mm
5/16"



490WJ08

S= 10 mm
3/8"



490WJ10

S= 12 mm
1/2"



490WJ12

OPTIONAL

Piatto di sicurezza / Safety plate



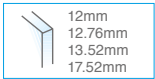
490WP90

Spina di sicurezza / Safety pin

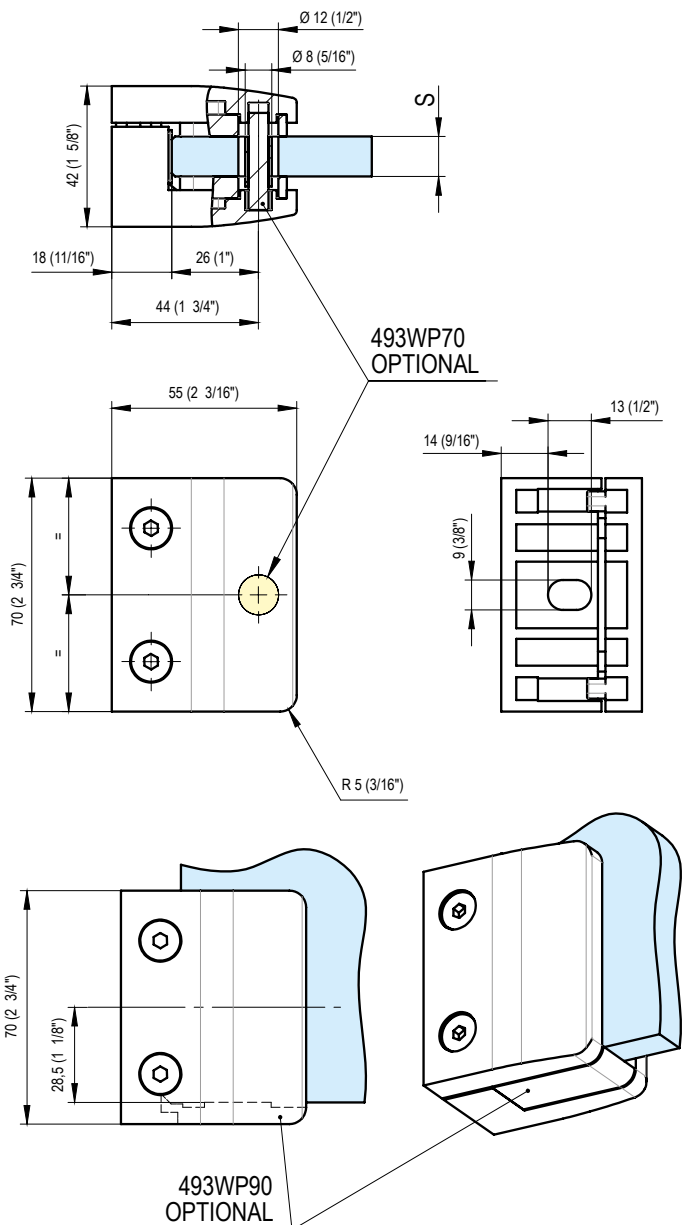
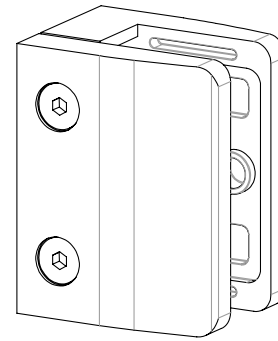


490WP70

493W10



- Morsetto rettangolare 55x70. In acciaio inox Aisi 316.
- Abrazadera rectangular 55x70. En acero Aisi 316.
- Rectangular clamp 55x70. In stainless steel Aisi 316.
- Rechteckiger Glasklemmhalter 55x70. Edelstahl Aisi 316.
- Pince rectangulaire 55x70 en inox Aisi 316.



Compreso / Included

Corpo morsetto / Clamp Body



493W10



Da ordinare in base allo spessore del vetro
To be purchased according to the glass thickness

Guarnizioni / Gaskets

S= 12 mm
1/2"



493WJ12

S= 12.76 mm
1/2"



493WJ12.76

S= 13.52 mm
17/32"



493WJ13.52

S= 17.52 mm
11/16"



493WJ17.52

OPTIONAL

Piatto di sicurezza / Safety plate



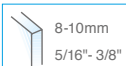
493WP90

Spina di sicurezza / Safety pin

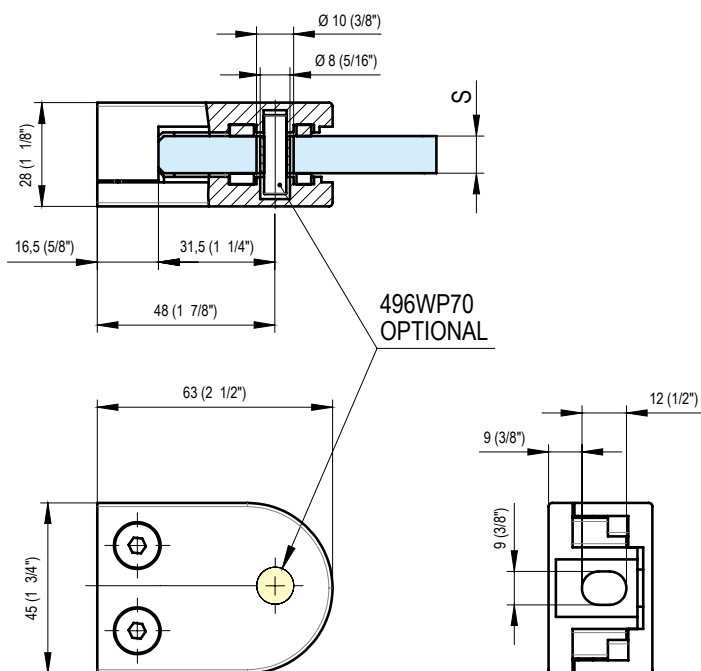
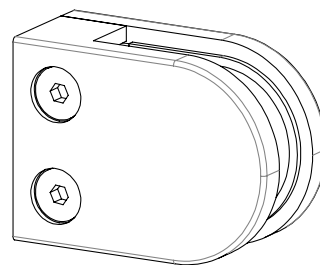


493WP70

496W10



- Morsetto tondo 45x63. In acciaio inox Aisi 316.
- Abrazadera redonda 45x63. En acero Aisi 316.
- Rounded clamp 45x53. In stainless steel Aisi 316.
- Abgerundeter Glasklemmhalter 45x63. Edelstahl Aisi 316.
- Pince ronde 45x63 en inox Aisi 316.



Compreso / Included

Corpo morsetto / Clamp Body



496W10



Da ordinare in base allo spessore del vetro
To be purchased according to the glass thickness

Guarnizioni / Gaskets

S= 8 mm
5/16"



496WJ08

S= 10 mm
3/8"



496WJ10

OPTIONAL

Spina di sicurezza / Safety pin

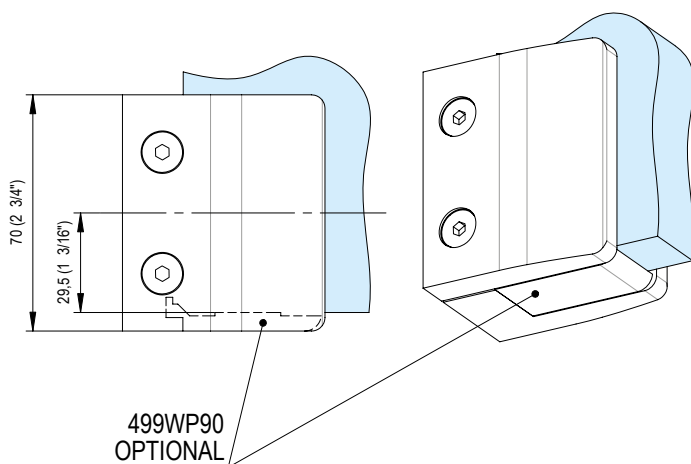
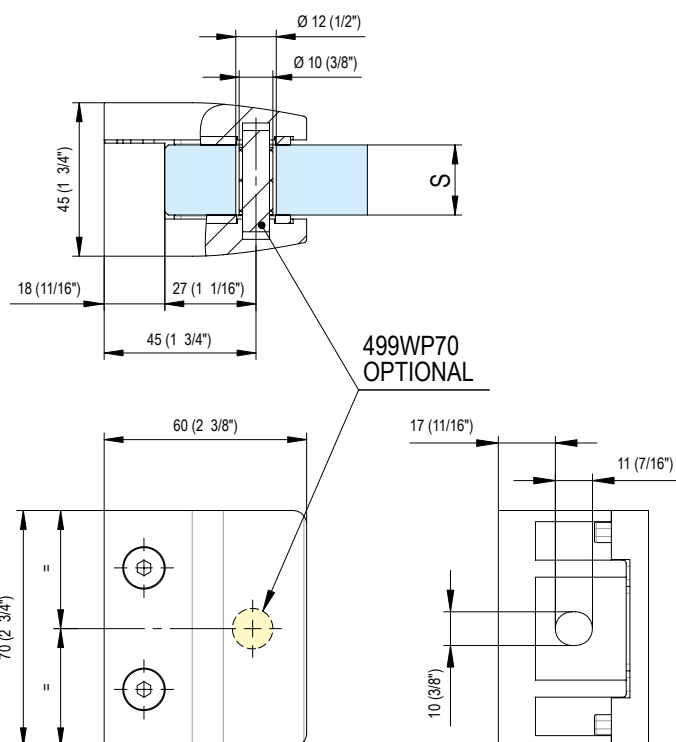
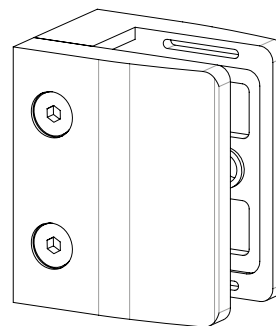


496WP70

499W10

20,76- 21,52mm
7/8"

- Morsetto rettangolare 60x70. In acciaio inox Aisi 316.
- Abrazadera rectangular 60x70. En acero Aisi 316.
- Rectangular clamp 60x70. In stainless steel Aisi 316.
- Rechteckiger Glasklemmhalter 60x70. Edelstahl Aisi 316.
- Pince carrée 60x70 en inox Aisi 316.



Compreso / Included

Corpo morsetto / Clamp Body



499W10

+

Da ordinare in base allo spessore del vetro
To be purchased according to the glass thickness

Guarnizioni / Gaskets

S= 20.76 mm



499WJ20.76

S= 21.52 mm
7/8"



499WJ21.52

OPTIONAL

Piatto di sicurezza / Safety plate



499WP90

Spina di sicurezza / Safety pin



499WP70