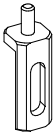
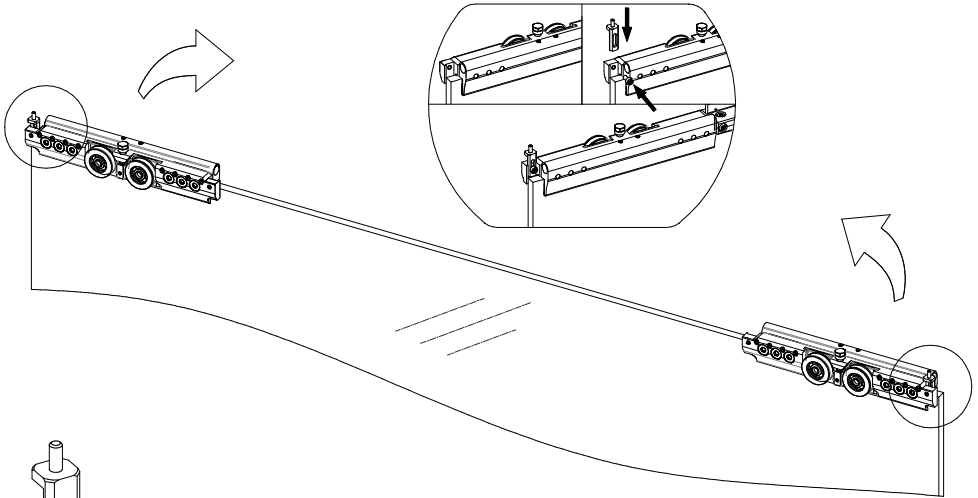


FLUIDO+

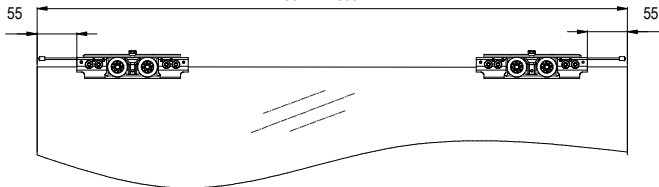
RETAINER + ANTISHOCK B110 B150



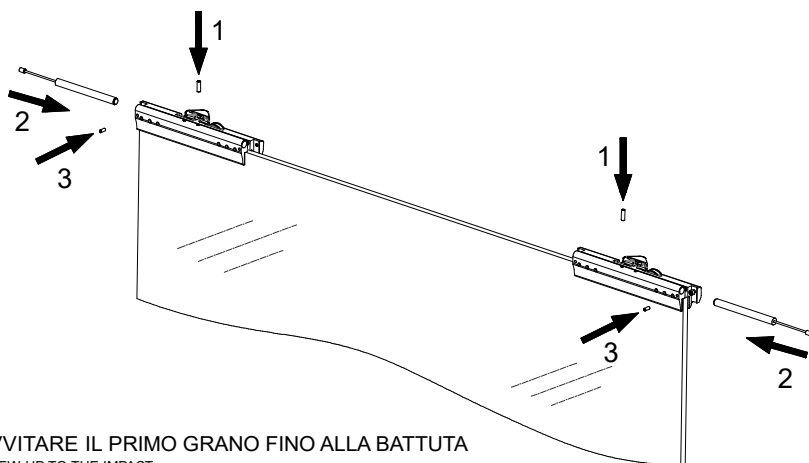
FISSARE SULLA PINZA IL DISPOSITIVO ANTISFILAMENTO
FIX THE ANTI-THREADING DEVICE ON THE CLAMP

B110 MIN. 700mm

B150 MIN. 800mm



SE SI VUOL GARANTIRE LA MINIMA LARGHEZZA DELLA PORTA, RISPETTARE LA QUOTA 55mm
IF YOU WANT TO GUARANTEE THE MINIMUM WIDTH OF THE DOOR, RESPECT THE DIMENSION 55mm



1 - AVVITARE IL PRIMO GRANO FINO ALLA BATTUTA

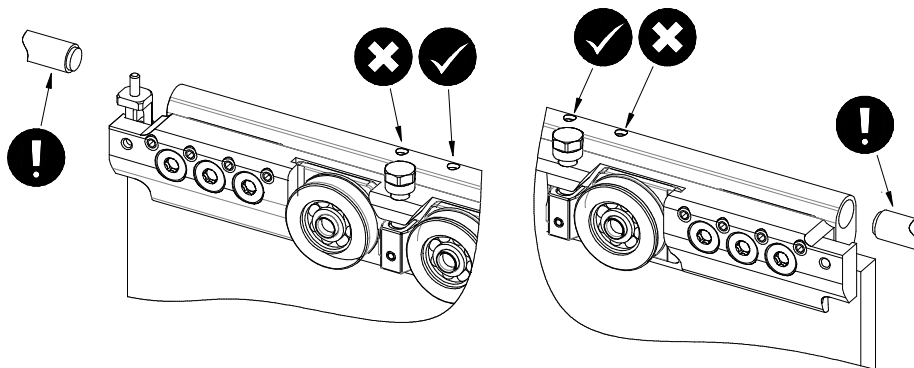
1 - SCREW UP TO THE IMPACT

2 - INSERIRE L'ANTISHOCK

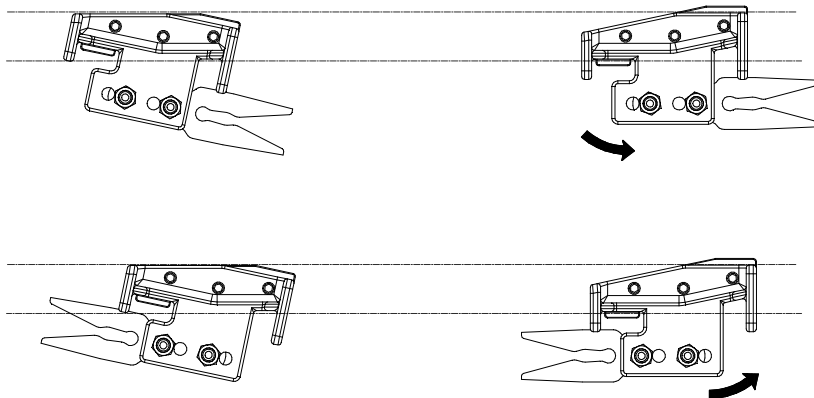
2 - INSERT THE ANTISHOCK

3 - AVVITARE IL SECONDO GRANO FINO ALLA BATTUTA

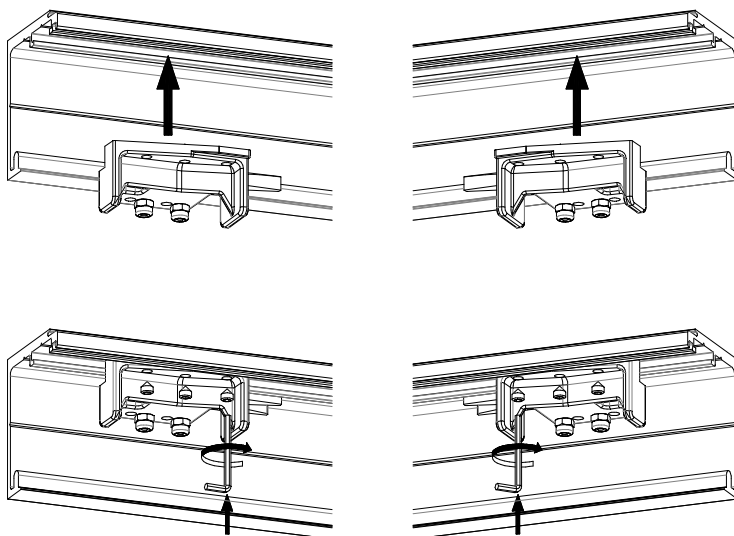
3 - SCREW UP TO THE IMPACT



PORRE ATTENZIONE A QUALE FORO UTILIZZARE PER IL BLOCCO DEL PISTONE ANTISHOCK
PAY ATTENTION TO WHICH HOLE TO USE FOR THE ANTISHOCK PISTON LOCK



INSERIRE NELL'APPOSITA SEDE LE STAFFETTE E RUOTARLE PER IL BLOCCAGGIO
 INSERT THE BRACKETS IN THE APPROPRIATE SEAT AND TURN THEM FOR LOCKING



BLOCCARE LE STAFFETTE CON LA BRUGOLA
 LOCK THE BRACKETS WITH THE ALLEN