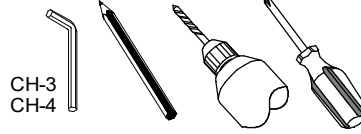
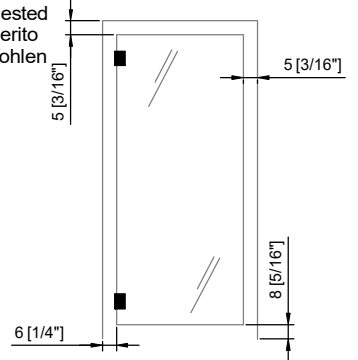


Tools Required
Strumenti Richiesti
Benötigtes Werkzeug

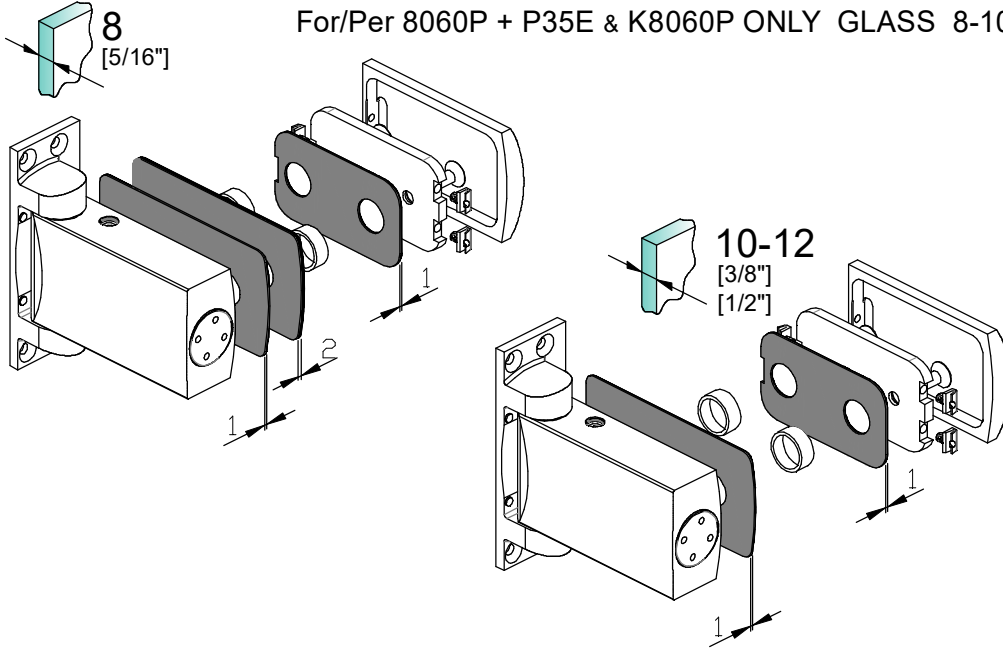


Suggested
Suggerito
Empfohlen



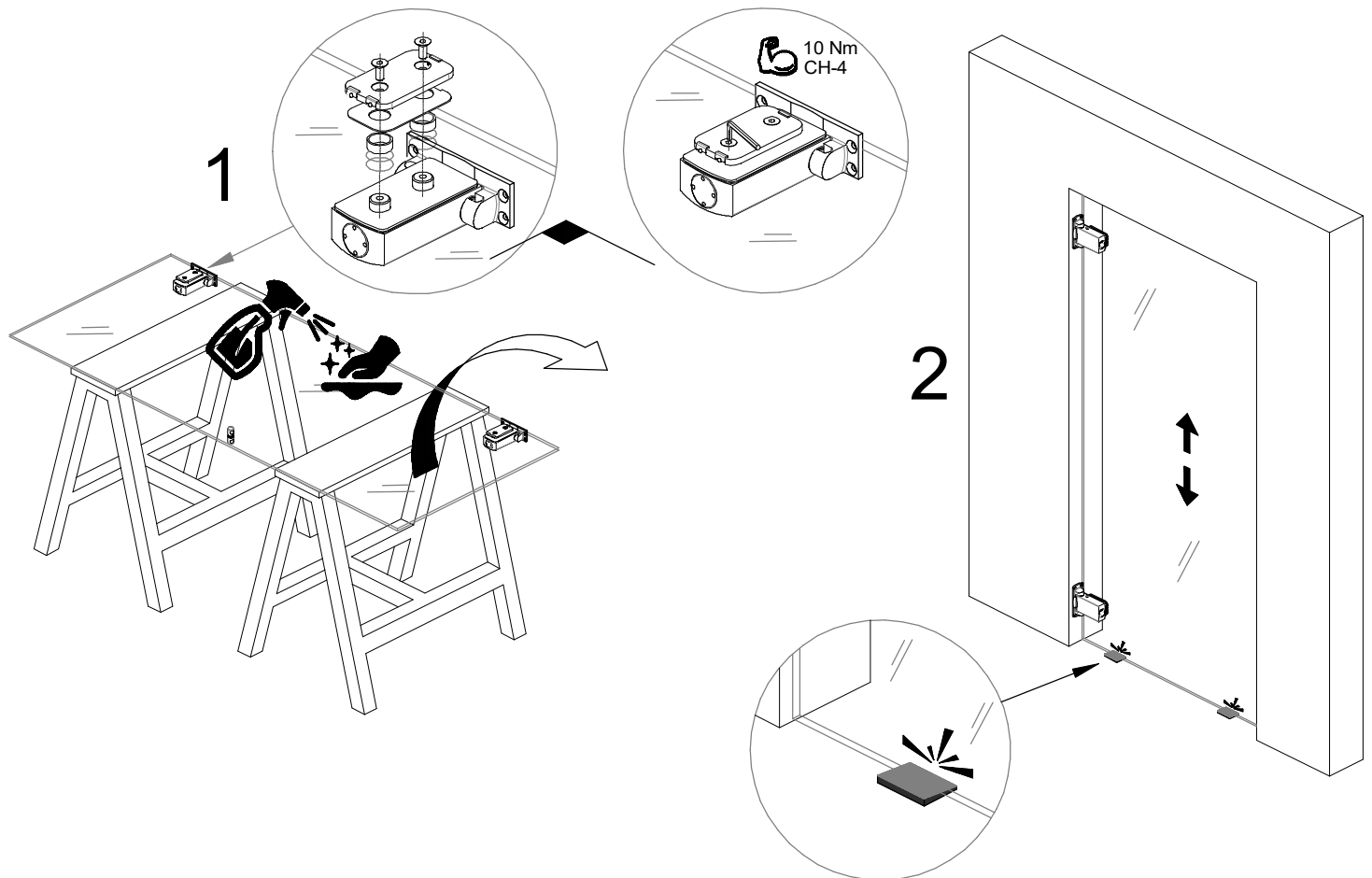
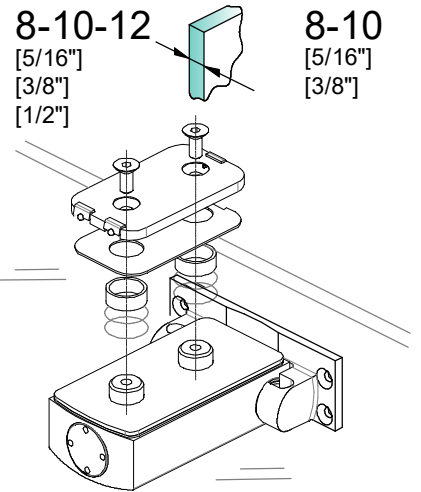
Gasket - Guarnizioni - Zwischenlagen

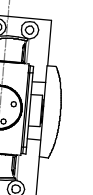
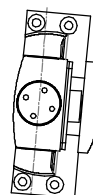
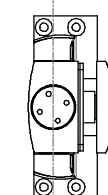
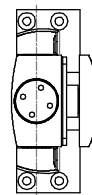
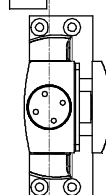
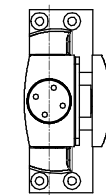
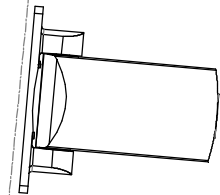
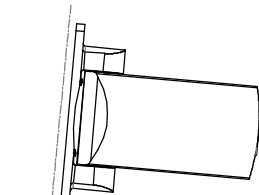
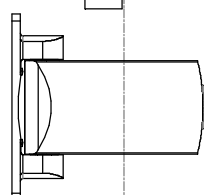
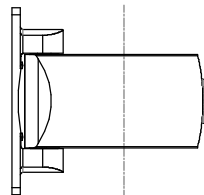
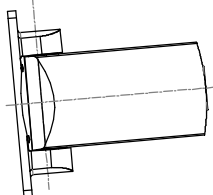
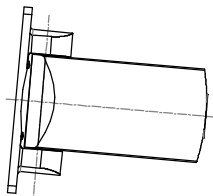
For/Per 8060P + P35E & K8060P ONLY GLASS 8-10



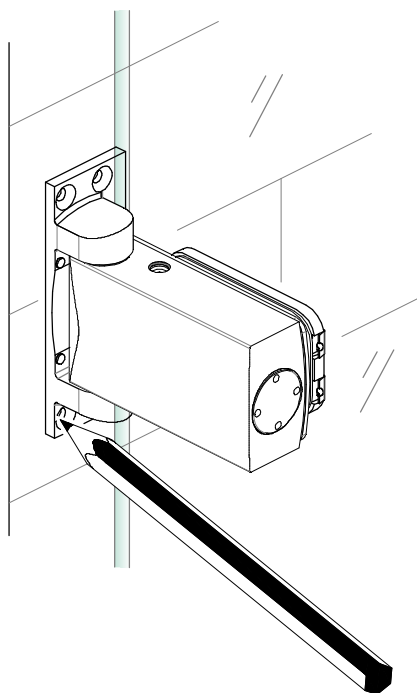
GLASS - VETRO - GLAS

Whit / Con / Mit
P35E & K8060P

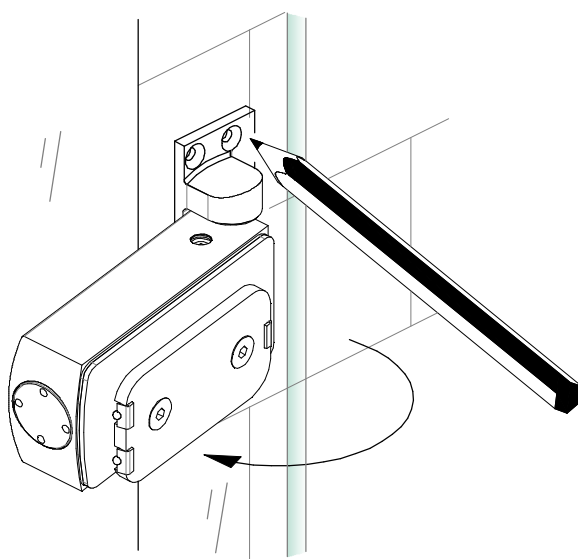




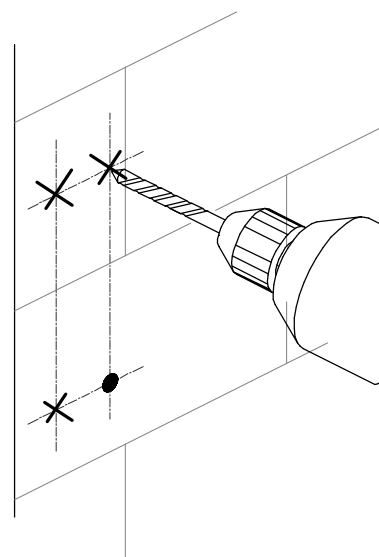
3



4

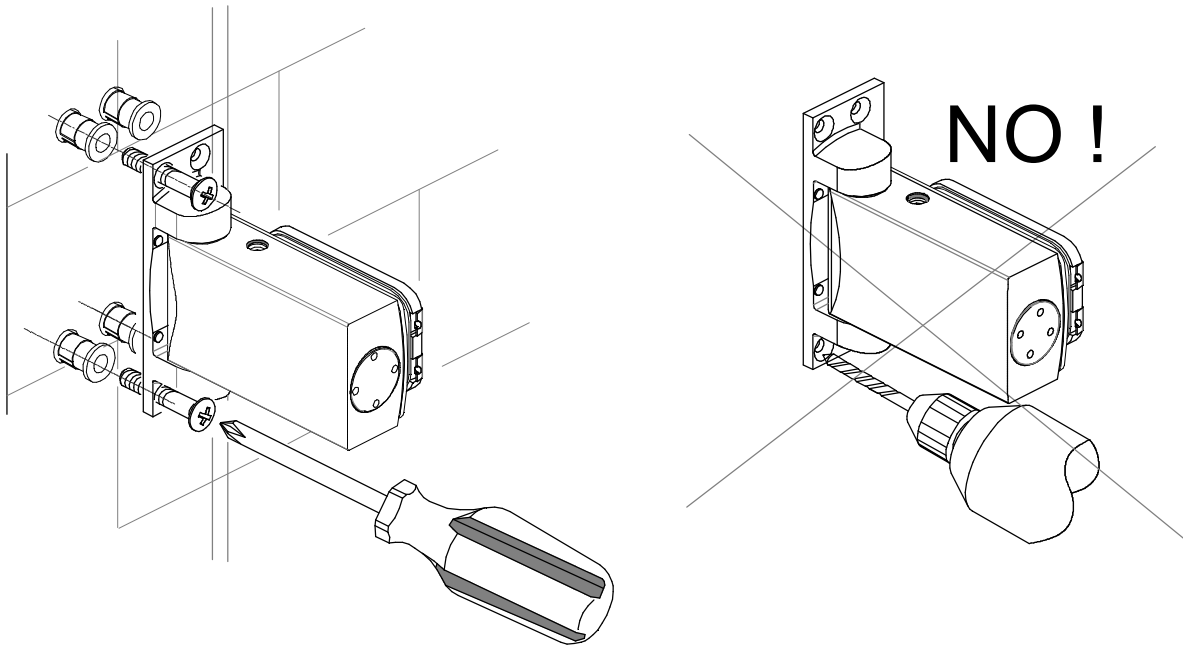


5



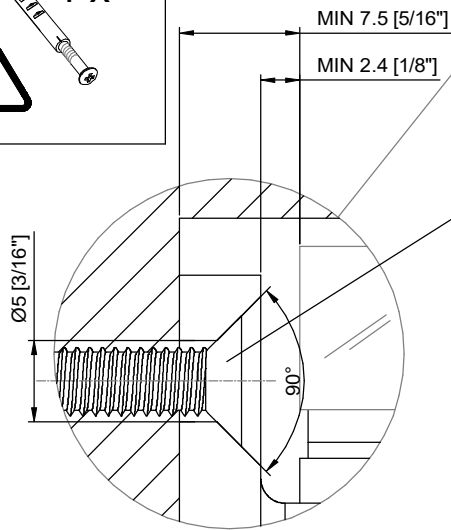


6

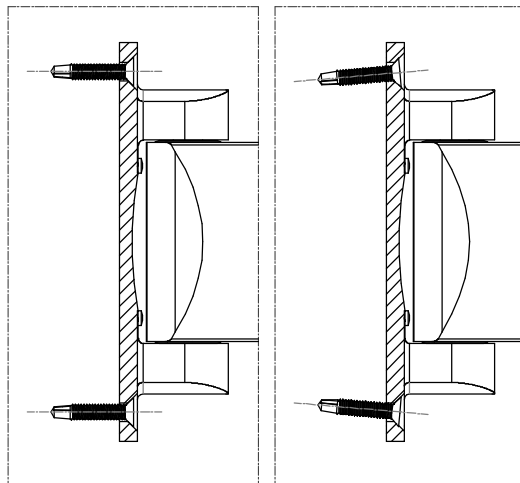
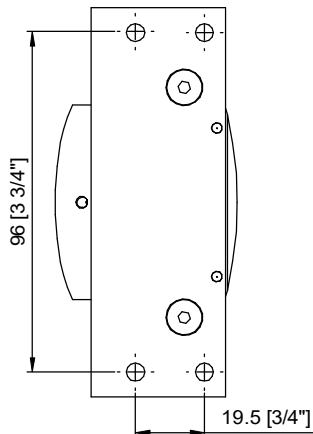
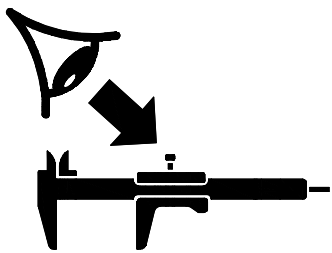


Fittings not included
Fissaggi non inclusi
Befestigungsschrauben

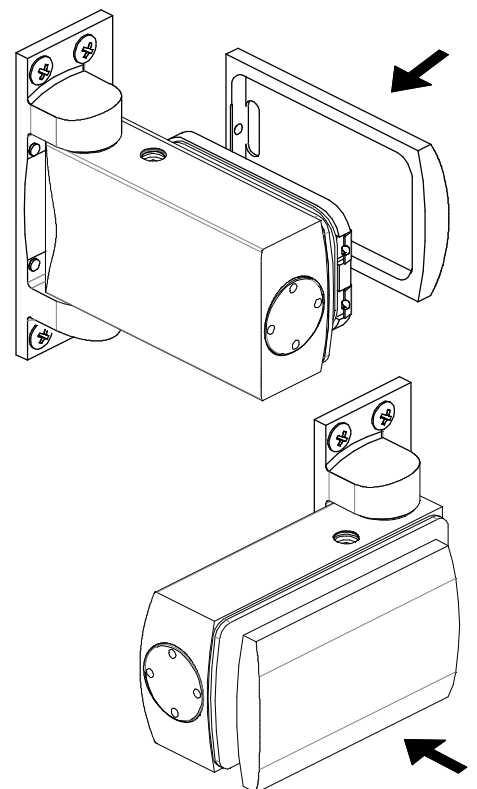
4 x



The screw head must remain under the cover
La testa della vite deve rimanere sotto il coperchio
Der Schraubenkopf muss unter der Abdeckung bleiben




7





6

 ONLY FOR 8060P - 8060PBT
SOLO PER 8060P - 8060PBT
NUR FÜR 8060P - 8060PBT

Closing speed adjustment

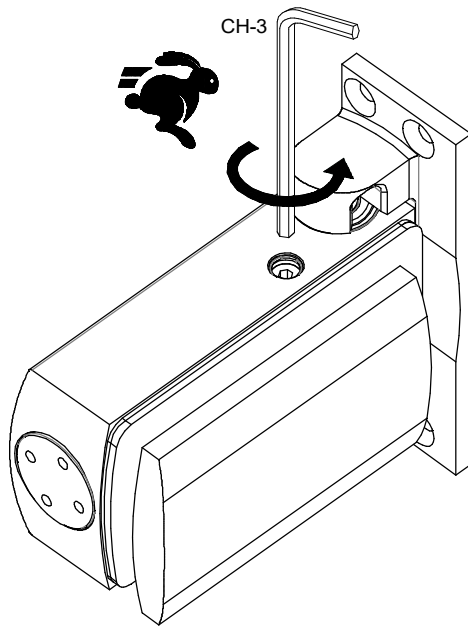
Regolazione della velocità di chiusura

Einstellung Schließgeschwindigkeit

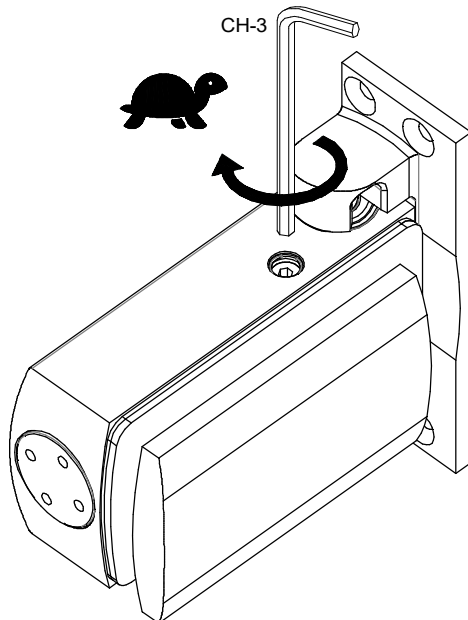
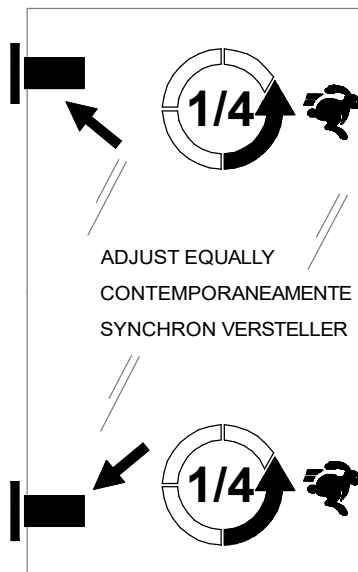
Factory settings: average pre-set

Impostazioni di fabbrica: media
preimpostata

Werkseitige Konfiguration:
durchschnittliche Voreinstellung



FAST - VELOCE - SCHNELL



SLOW - LENTO - LANGSAM

