



VETRINE e REGGIMENSOLA

Escapartes y Soporta Estante
Cabinets and shelf brackets
Vitrinen- und Regalbefestigungen
Vitrines et Etagères

vetrine / cabinets

Alluminio / Aluminium



B43
finiture / colors
13-14-15-16-40

Alluminio / Aluminium



B46
finiture / colors
13-14-15-16-40

Polycarbonato / Polycarbonate



TQ10

reggimensola / clamps

Ottone / Brass



B735
finiture / colors
13-14-15-16-40

Ottone / Brass



B73
finiture / colors
13-14-15-16-40

Ottone / Brass



B835
finiture / colors
13-14-15-16-40

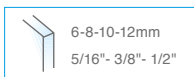
Ottone / Brass



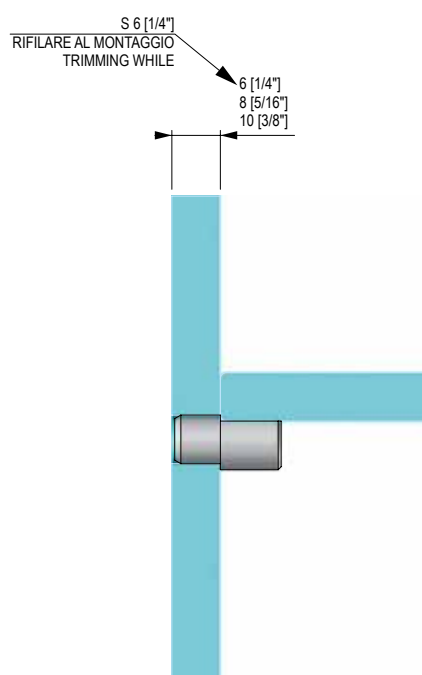
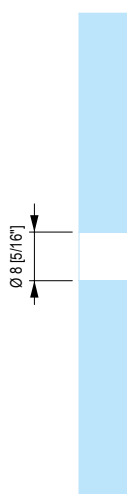
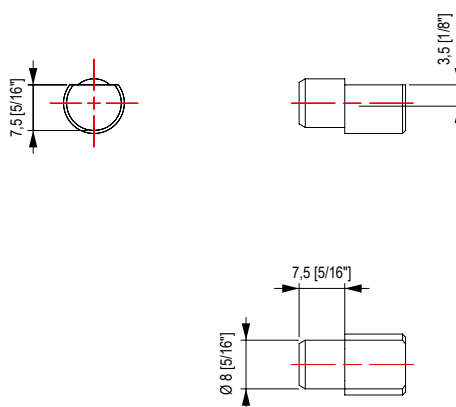
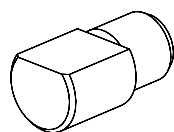
B83
finiture / colors
13-14-15-16-40



TQ10

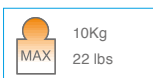
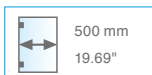


- Tassello sostegno ripiani.
Polycarbonato (10PZ)
- Taco de soporte para rellanos.
Polycarbonato (10PZ).
- Shelf support dowel
Polycarbonato.(10Pieces)
- Dübel für Regalstütze.
Polycarbonat (10Stuck).
- Cheville de support d'étagère.
Polycarbonato (10 Pièces).

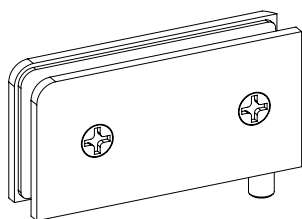
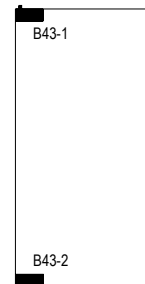
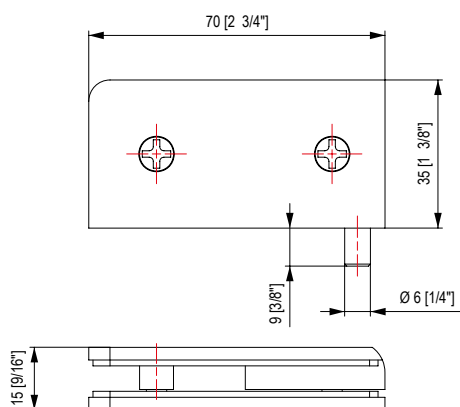


B43

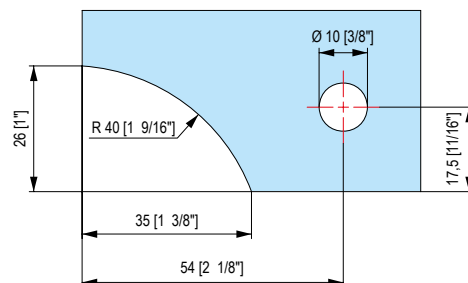
B43R = destra - derecha - right - rechts - droite
 B43L = sinistra - izquierda - left - links - gauche



- Cernierina per vetro da 6 mm.
- Bisagra pequeña para vidrio de 6 mm.
- Small pivot patch for 6 mm. glass.
- Kleines Band für 6 mm. Glasdicke.
- Petite charnière pivot pour verre de 6 mm.



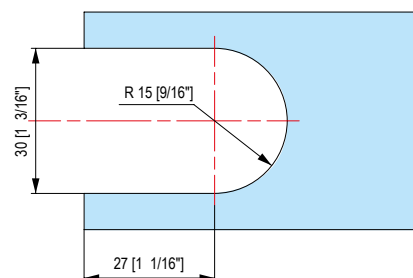
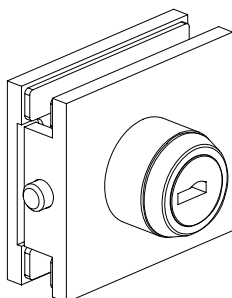
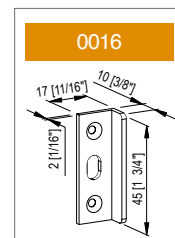
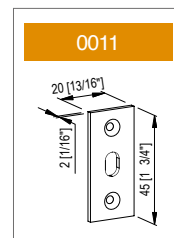
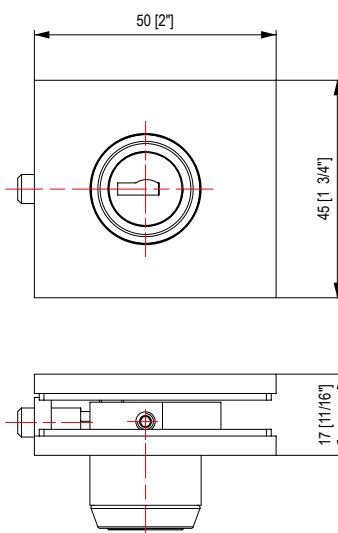
B43L



B46

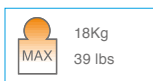


- Serratura per vetro di 6-8mm. Una mandata.
- Cerradura para vidrio de 6-8mm.
- Lock for 6-8mm glass with single turn dead bolt.
- Schloss für 6-8mm Glas. Einmal Umdrehung.
- Serrure pour verre de 6-8mm. Un tour.

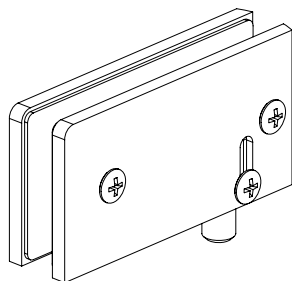


B53

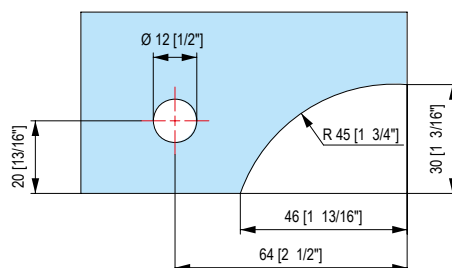
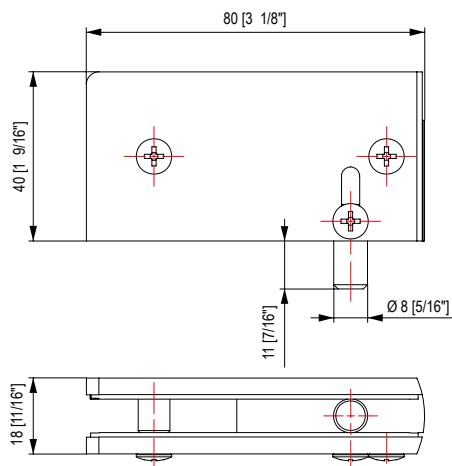
B53R = destra - derecha - right - rechts - droite
B53L = sinistra - izquierda - left - links - gauche



- Cernierina per vetro da 8 mm.
- Bisagra pequeña para vidrio de 8 mm.
- Small pivot patch for 8 mm glass.
- Kleines Band für 8 mm Glasdicke.
- Petite charnière pivot pour verre de 8 mm.



B53L



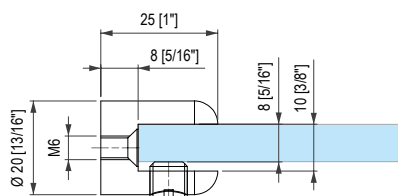
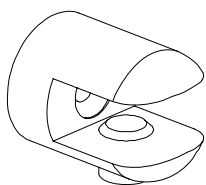
B53-1

B53-2

B735



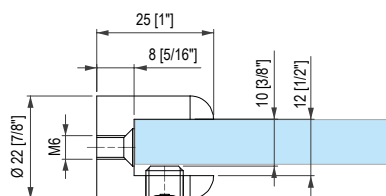
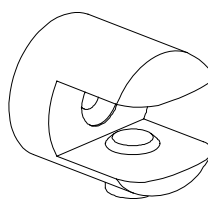
- Morsetto reggimensola tondo diametro 20mm. Per piccoli ripiani.
- Soporta estante redondo, diámetro 20mm. Para pequeños rellanos.
- Clamp for angle bracket – round diam.20 mm. For small shelf.
- Runder Glasplattenträger für Tragkonsole. Durchmesser 20mm. Für kleine Regale.
- Pince en laiton pour équerre, Ø20 mm. Pour petite étagère.



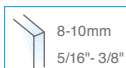
B73



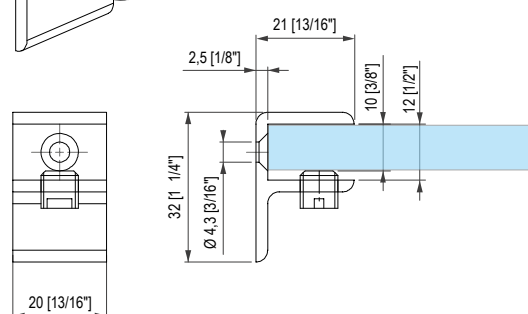
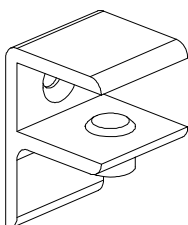
- Morsetto reggimensola tondo diametro 22mm. Per piccoli ripiani.
- Soporta estante redondo, diámetro 22mm. Para pequeños rellanos.
- Clamp for angle bracket – round diam.22 mm. For small shelf.
- Runder Glasplattenträger für Tragkonsole. Durchmesser 22mm. Für kleine Regale.
- Pince en laiton pour équerre, ø22 mm. Pour petite étagère.



B835



- Morsetto reggimensola L=20mm. Per piccoli ripiani.
- Soporta estante rectangular, L=20mm. Para pequeños rellanos.
- Clamp for angle bracket – L = 20 mm. For small shelf.
- Glasplattenträger für Tragkonsole. L= 20mm. Für kleine Regale.
- Pince en laiton pour équerre, L = 20 mm. Pour petite étagère.



B83



- Morsetto reggimensola L=45mm. Per piccoli ripiani.
- Soporta estante rectangular, L=45mm. Para pequeños rellanos.
- Clamp for angle bracket – L = 45 mm. For small shelf.
- Glasplattenträger für Tragkonsole. L= 45mm. Für kleine Regale.
- Pince en laiton pour équerre, L = 45 mm. Pour petite étagère.

